



VIKAS INDUSTRIES

A GOVT. OF INDIA RECOGNISED STAR EXPORT HOUSE

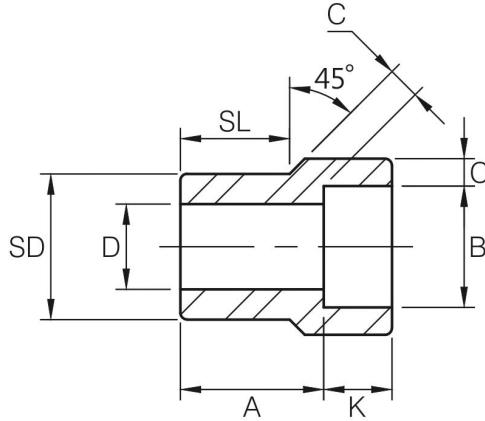


AN ISO 9001: 2015 CERTIFIED COMPANY

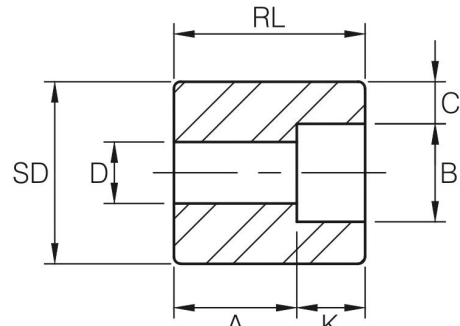
A UL LISTED COMPANY

REDUCER INSERT

MSS SP-79-2011



TYPE 1



TYPE 2⁽¹⁾

(Continued)

Dimensions are in millimeters.

Nom. Pipe Size	Type ⁽²⁾		Socket		Shank Dia. SD	Laying Length A		Bore D		Wall (Min) C		Length			
	3M	6M	Dia. B	Depth (Min) K		3M	6M	3M	6M	3M	6M	Length			
												3M	6M	3M	6M
2-1/2x2	1	1	61.4	16.0	73.0	46.0	42.7	52.4	42.8	6.93	10.92	38.1	31.8	-	-
2-1/2x1-1/2	2	2	49.0	12.5	73.0	35.0	35.0	40.8	33.9	6.35	8.92	-	-	53.8	53.8
2-1/2x1-1/4	2	2	42.9	12.5	73.0	36.6	36.6	35.0	29.4	6.07	7.92	-	-	53.8	53.8
2-1/2x1	2	2	34.1	12.5	73.0	38.1	38.1	26.6	20.7	5.69	7.92	-	-	53.8	53.8
2-1/2x3/4	2	2	27.4	12.5	73.0	39.6	38.1	20.9	15.5	4.90	6.96	-	-	53.8	53.8
3x2-1/2	1	1	74.1	16.0	88.9	38.1	57.2	62.7	54.0	8.76	11.91	31.8	44.4	-	-
3x2	2	2	61.4	16.0	88.9	25.4	31.8	52.4	42.8	6.93	10.92	-	-	47.4	53.8
3x1-1/2	2	2	49.0	12.5	88.9	28.4	31.8	40.8	33.9	6.35	8.92	-	-	47.4	53.8
3x1-1/4	2	2	42.9	12.5	88.9	30.2	31.8	35.0	29.4	6.07	7.92	-	-	47.4	53.8
3x1	2	2	34.1	12.5	88.9	31.8	31.8	26.6	20.7	5.69	7.92	-	-	47.4	53.8
4x3	2	-	90.0	16.0	114.3	33.3	-	77.9	-	9.52	-	-	-	60.4	-
4x2-1/2	2	-	74.1	16.0	114.3	38.1	-	62.7	-	8.76	-	-	-	60.4	-
4x2	2	-	61.4	16.0	114.3	38.1	-	52.4	-	6.93	-	-	-	60.4	-
4x1-1/2	2	-	49.0	12.5	114.3	41.1	-	40.8	-	6.35	-	-	-	60.4	-
4x1-1/4	2	-	42.9	12.5	114.3	42.9	-	35.0	-	6.07	-	-	-	60.4	-

(1) At the option of the manufacturer Type 2 Reducers may be furnished in Type 1 configuration.

(2) 3M & 6M symbols denote 3000 and 6000 classes.

DIMENSIONAL TOLERANCES OF REDUCER INSERT

MSS SP-79-2011

Unit : mm

	1/4	3/8	1/2	3/4	1	1-1/4	1-1/2	2	2-1/2	3	4
Laying Length (A)			+1.5 -0.0				+2.0 -0.0			+2.5 -0.0	
Socket Dia (B)										+0.3 -0.2	
Bore (D)											+1.5
Shank Dia (SD)											+0.25 ± 0.50 ± 0.8
Shank Length (SL)			+0.0 -1.5				+0.0 -2.0			+0.0 -2.5	